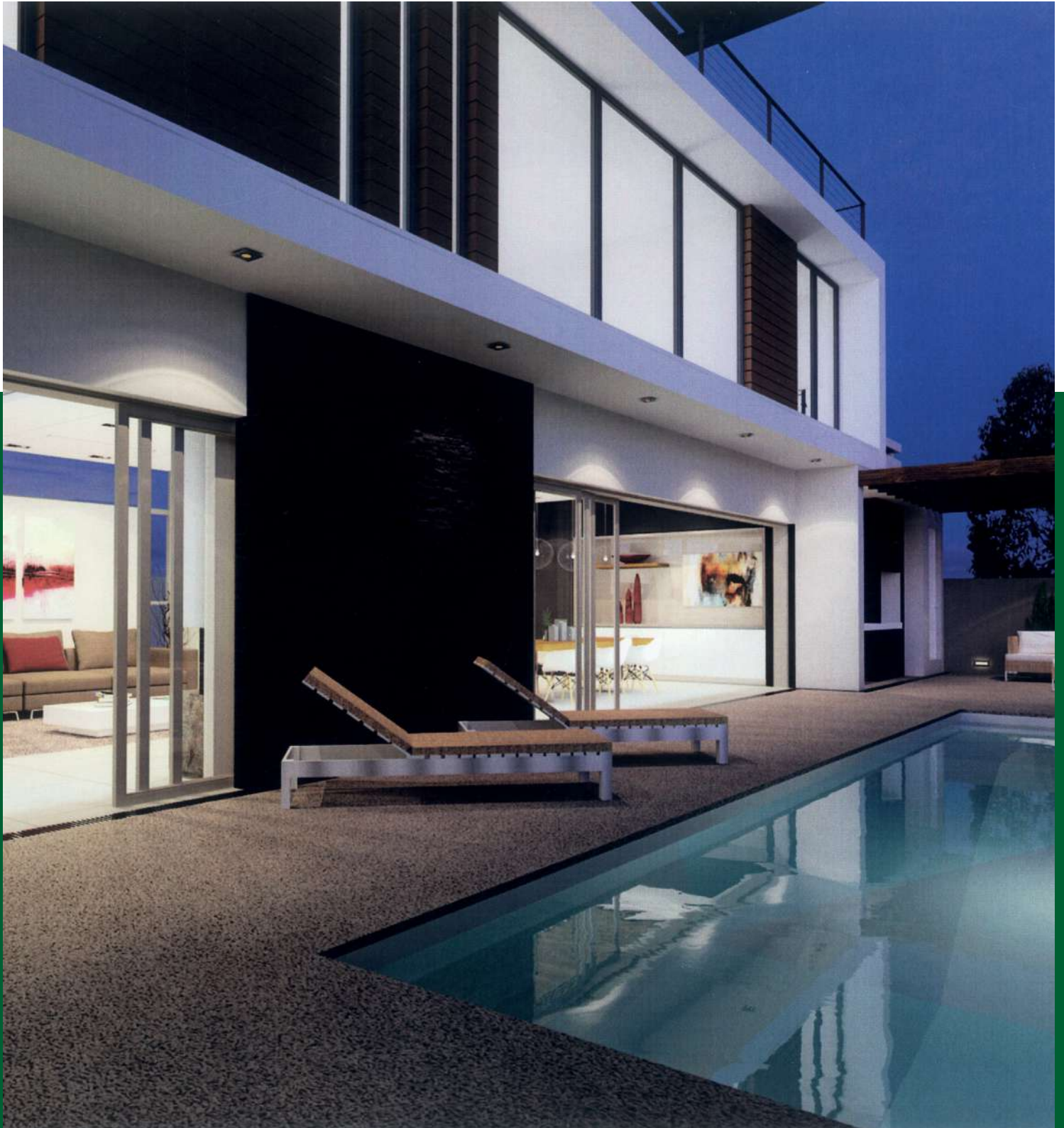




# 4D BUILDING CONSTRUCTION





## THE 4D VISION & MISSION



Offering affordable construction services, 4D Building Construction has a combined 20 years of experience within its management team. Established in 2002, the company has expanded to include architecture and cost services to its repertoire and continues to innovate and grow its portfolio.

4D Building Construction strives for excellence and the highest quality of service, which is achieved by forging close and lasting relationships with our clientele. Part of this includes providing the right environment to attract and retain high-calibre talent, ensuring project deadlines are met or exceeded and maintaining strict health and safety practices across all project sites. As part of our mandate, 4D Building

Construction is committed to making a positive contribution to the South African economy by providing both our employees and sub-contractors with opportunities to practice their craft and participate and empower themselves within the building industry.

This is achieved through the creation of job opportunities for unskilled and semi-skilled historically disadvantaged individuals, irrespective of their race, creed, gender or religious affiliations. Our working environment has been created to co-exist with the community and allow diverse human capital to develop their entrepreneurial and leadership skills, thereby equipping them with the ability to uplift their quality of life.

**\*A Level 1 BEE company with more than 16 years of experience in the residential and corporate building sectors**

**\*CIDB rating of 6GB (PE) with a 7GB (PE) rating pending**



DIRECTION • DIVERSITY • DISTINCTION • DEVELOPMENT

# OUR TEAM & SERVICES

Built on the premise of family, our team is comprised of 16 full-time staff with a combined experience of more than 14 years who have served with us for an average of 10 years. Their knowledge and relevance of construction provides insight into projects that are contemporary and will stand the test of time. In order to ensure stable profits and growth, our management team is streamlined and proactive in our approach to projects, both large and small.

We also work with highly skilled freelancers and subcontractors, where required. Our five core subcontracting partners have worked with 4D Building Construction for a number of years and include plumbers, electricians and quantity surveyors of the highest standard.

Our portfolio of services includes new building construction, alterations, installation of ceilings and partitions, paving and tiling, quantity surveying, alternative water-heating solutions, general plumbing and drainage, and painting and general maintenance.



**MOHAMED SHARIEF AMIEN**

With more than 20 years' experience in construction, Sharief Amien has a detailed knowledge and insight of the industry. He is an experienced, adaptable manager with a keen eye for detail. As the current director at 4D Building Construction, he has an active hand in coordinating and supervising all projects.

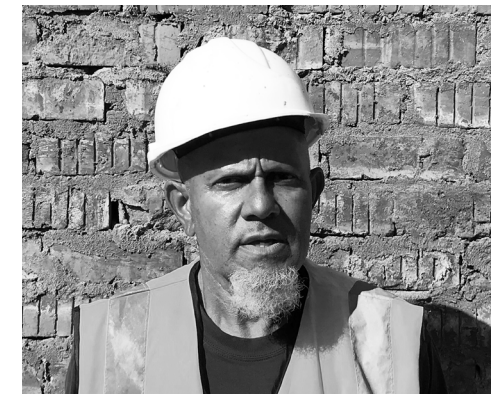


**RAEES AMIEN**

After completing a degree in industrial design at the Cape Peninsula University of Technology (CPUT) and with 10 years of industry experience, Raees brought his trans-disciplinary skills to 4D. Combining business, art and engineering know-how, he looks to the user experience to inform creative construction concepts.



**AJMODIEN JAWOODIEN**  
Position: Foreman  
Length of service: 4 years



**SULAIMAN JANUARY**  
Position: Foreman  
Length of service: 15 years



**PAULIS PHELLO**  
Position: Supervisor  
Length of service: 10 years



**GODFREY MXABA**  
Position: Supervisor  
Length of service: 15 years



**ALFRED MADZWILA**  
Position: Supervisor  
Length of service: 9 years



# ERNEST JOHANNES PRINSLOO

The newest addition to the 4D Building Construction team is Ernest Prinsloo, who brings a dearth of experience to the team, including having held the following positions:

- **Western Cape Regional Coordinator, Institute for Timber Construction (ITC-SA)**
- **Consultant and Site Manager, Arnold Meiring and Associates**
- **Quality Assessor, National Home Builders Registration Council (NHBC)**
- **Project Inspector, National Home Builders Registration Council (NHBC)**
- **Building Inspector, Cape Town City Council**
- **Site Agent and Foreman, Julius Cohen (Pty) Ltd**
- **Carpentry Trade and Trade Foreman, Julius Cohen (Pty) Ltd**

In addition to holding a National Diploma in Building Survey from the Cape Peninsula University of Technology (CPUT), Ernest has project management qualification and experience, and is a **law enforcement officer in terms of the NHBC**.







## EMPLOYMENT EQUITY, SOCIAL DEVELOPMENT & SKILLS TRANSFER

As part of our commitment to becoming a company where employees actively participate in work methods, services and innovation, our employee empowerment is not solely based on business activities but on human development and participation. We believe empowerment is not only the domain or responsibility of the government; it is the responsibility of all South African leaders to empower their workforces through ongoing training and development. We, therefore, assist in the implementation of the governmental social development plan with skill transfer, which effectively contributes to the development of individuals at a sustainable and profitable level.

In keeping with the Employment Equity Act No. 55 of 1998, 4D Building Construction is steadfast in our purpose to promote equal opportunity, fair treatment and the elimination of unfair discrimination in terms of

race, creed, gender, religion and disability. We have implemented affirmative action measures to redress the disadvantages in employment experienced by designated groups to ensure equitable representation in all occupational categories and levels of the workforce. As a 100% black-owned company, we commit to recruit historically disadvantaged individuals in communities where we are awarded projects.

We also contribute to the integration of all employees, including those who are disabled, at equitable and market-related remuneration. Disabled individuals in South Africa have long been a group that has been discriminated within social and workplace settings due to widespread ignorance, fear and stereotypes. However, at 4D Building Construction, we believe that having a disability does not diminish the right of an individual to seek gainful employment.

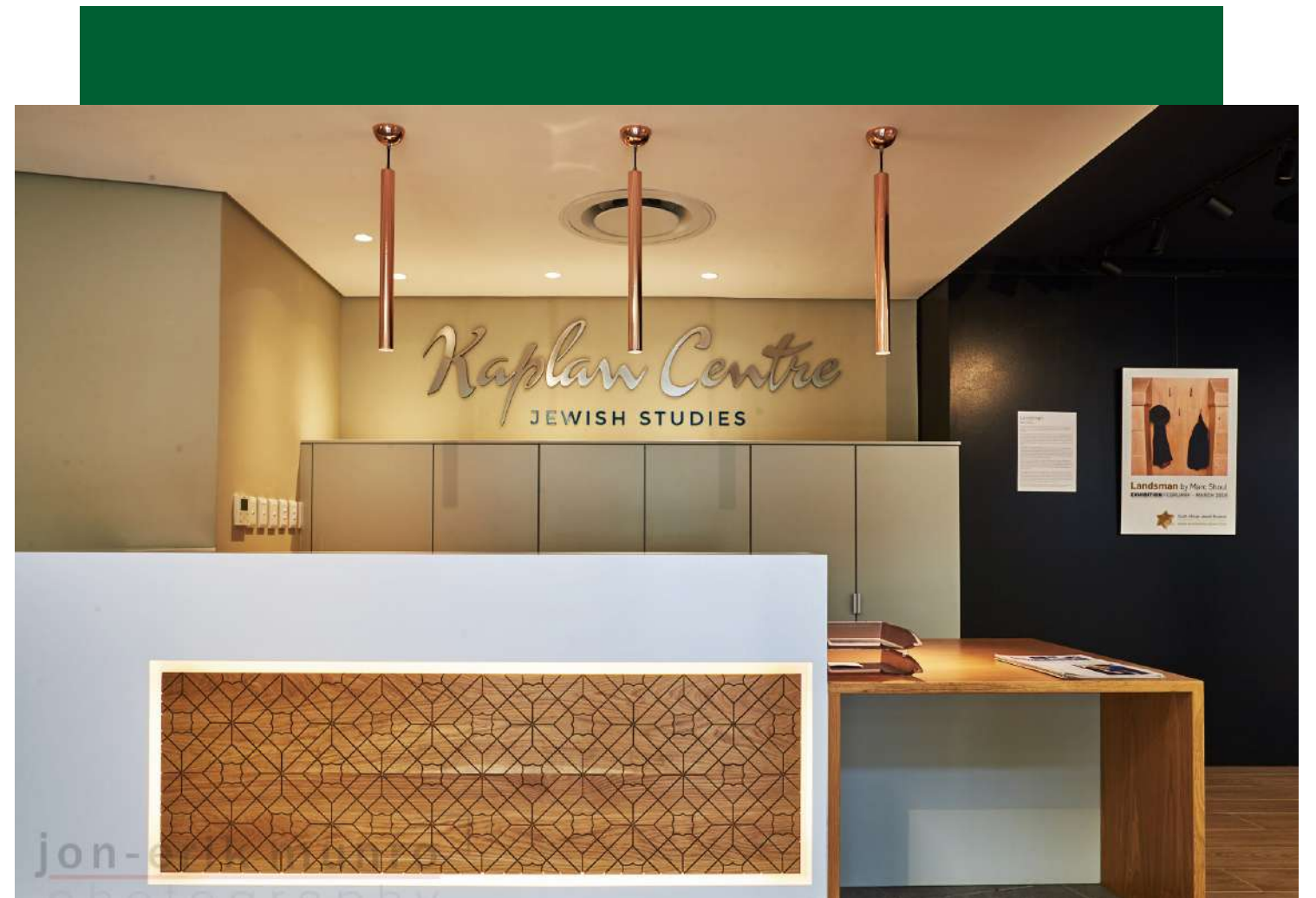


## CASE STUDY

## KAPLAN CENTRE, UCT

As one of the most recognisable tertiary institutes in Africa, the University of Cape Town is committed to an educational environment that reflects the changes in our modern lifestyle while providing students and academics with the amenities needed to fulfil their academic pursuits. The Kaplan Centre project was instigated as a space for Jewish Studies within the larger religious studies portfolio offered by the university.

UCT's vision for the centre was a stylish and minimal mixed-use building that provides both students and academics with spacious, well-lit rooms, a welcoming atmosphere and indoor-outdoor areas for a respite from an educational institute that is generally seen as a formal, antiquated space. The large windows and spacious rooms with floor-to-ceiling bookshelves and retrofitted lighting contribute to a space that feels contemporary yet studious.





## CASE STUDY

# SACTWU SECOND FLOOR

The South African Clothing & Textile Workers Union (SACTWU), based in Salt River, Cape Town, needed a clean aesthetic that aligned with the union's brand identity. As one of the largest unions in the country that dates back to 1989, SACTWU's space needed to be remodelled to keep up with the fast-paced innovation and ever-evolving aesthetic of the fashion industry. In collaboration with ACG Architects & Development

Planners, who incorporated the yellow, red and brown from the SACTWU logo into strategic elements of the interior, we constructed a space with sleek lines, immaculate wooden elements – such as flooring, slats on the reception desk and specific ceiling areas – as well as clever, aerated ceiling design, the space brings the outdoors inside without losing any of its professional charm.

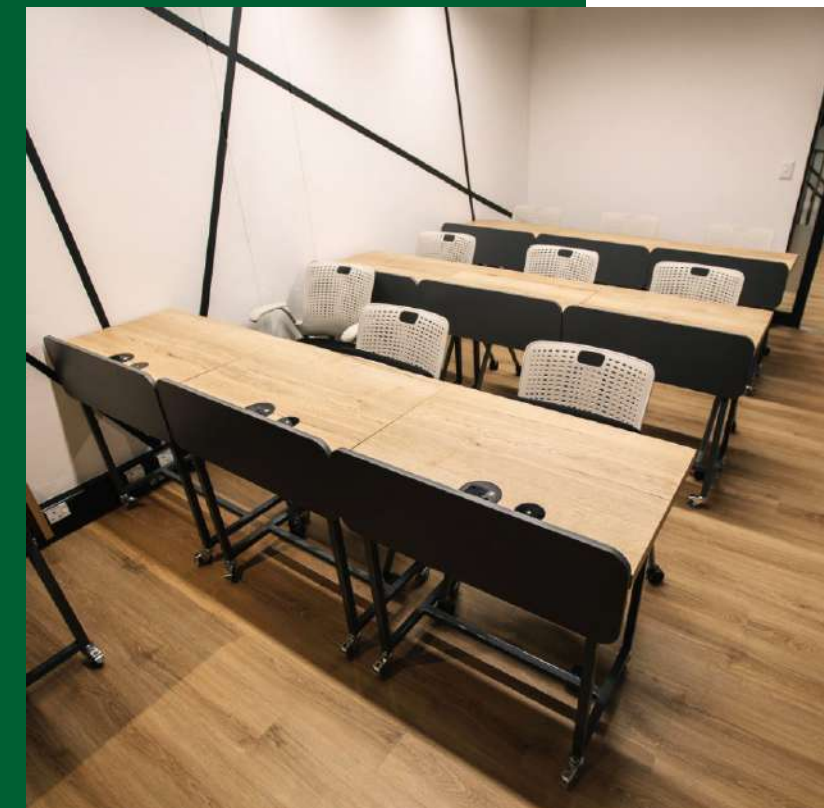
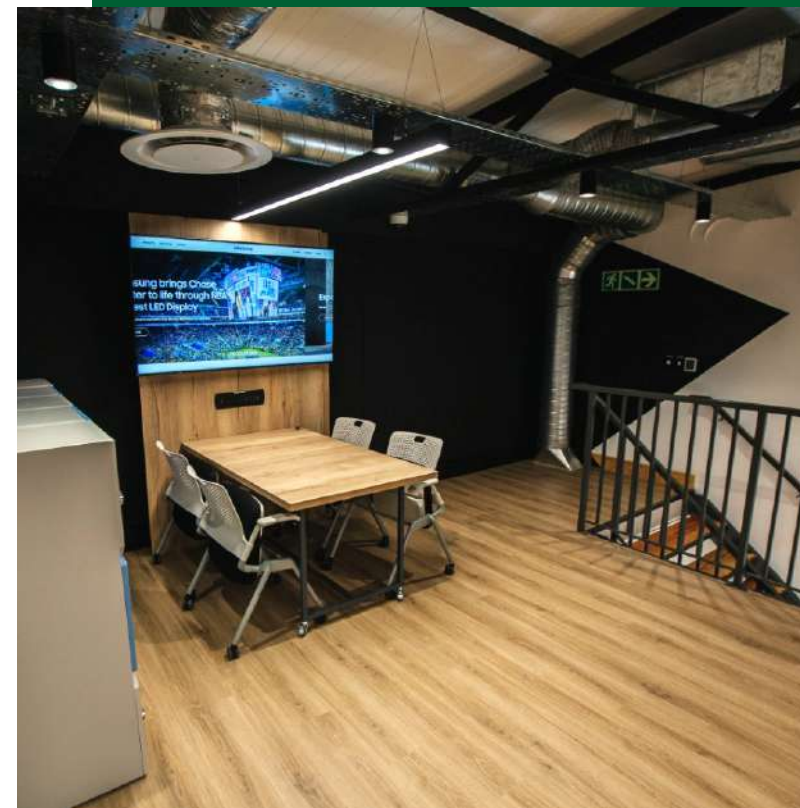




## CASE STUDY

# UWC SAMSUNG FUTURE-INNOVATION LAB

As its name implies, the Samsung Future-Innovation Lab at the University of the Western Cape is a forward-thinking space – and its design and construction needed to reflect that. Working together with Pure Design Interiors, we constructed a scholarly space that lends itself to minimal distractions while providing enough technological outputs – such as good lighting, high-fidelity acoustics and various electrical outlets – that lends itself to idea generation and innovation.





## CASE STUDY

## PRIVATE RESIDENCE, BISHOPSCOURT

Currently in construction phase, this private residence in Bishopscourt is being completed in collaboration with JZE Architects. Floating levels and floor-to-ceiling windows open the residence up to the outdoors in keeping with the current trend of minimal yet palatial interiors.







## MEASUREMENT

4D Building Construction understands the importance of setting performance indicators as well as measuring the progress of the projects we undertake to ensure they are completed to deadline.

As such, before a project begins, we outline a number of management and reporting processes with the client. These include regular meetings and weekly progress reports that are transparent about the challenges and solutions on any given project.

### Weekly progress reports include:

- Project overview to date
- Progress according to agreed-upon timelines
- Delays and reasons thereof
- Challenges that may influence a project's progress
- Workable solutions and updated schedules
- Outstanding queries and approvals
- A breakdown of plant and labour changes, if any
- Health and safety protocols
- Appointments and payment certificates.

**This portfolio includes selected projects only. Contact us for a full list of completed projects.**

## CONTACT

**4D BUILDING CONSTRUCTION  
P.O. BOX 647, MAITLAND, 7404**

**SHARIEF@4D-GROUP.CO.ZA  
RAEES@4D-GROUP.CO.ZA  
MISHKAAH.AMIEN@YAHOO.COM**

**082 456 4212 | 072 024 0679**

**CIDB GRADING: 6GB (PE) 198 976**





*4D BUILDING CONSTRUCTION*